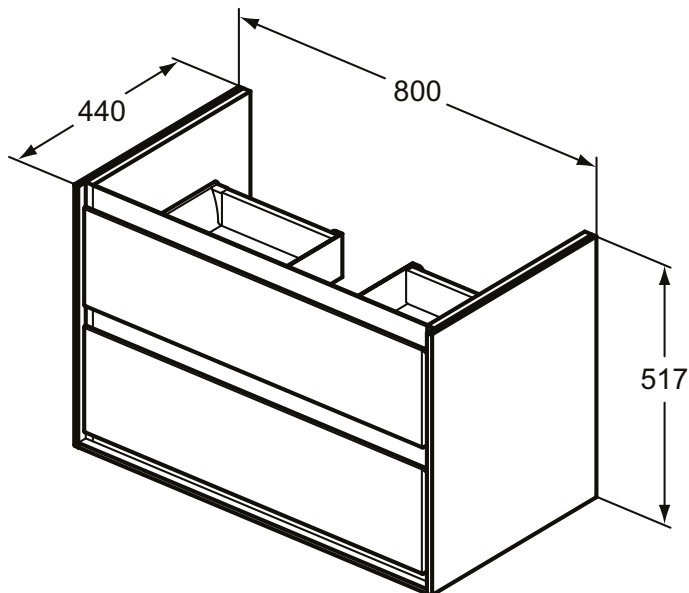
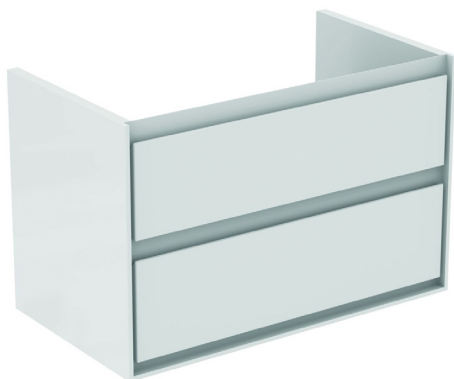


Furniture

Connect Air



Article-No.: **E0819B2**

Wall mounted basin unit 80cm, 2 drawers

Connect Air basin unit 80 cm with 2 drawers with edged panels (handles not necessary) and Soft close system. Including: Mounting kit. For assembly with: Connect Air Vanity basin 84 cm E027901 or Vessel basin 60 cm E034801/40 cm E034701 with required Worktop E0849. Recommended: Space Saving Siphon EE23033967 (please, order separately). See the IS Catalogue/Price list for more information on Recommended equipment and type of materials used.

Colour: B2 - Main outer finish is Gloss White, Internal finish is Matt White

More product details:

| | |
|------------------|---------------|
| Type: | Vanity unit |
| Mounting: | Wall mounted |
| Style: | Contemporary |
| Net Weight (kg): | 32,2 |
| Material: | Lacquered MDF |
| Designer: | Studio Levien |
| Height (mm): | 517 |
| Width (mm): | 800 |
| Depth (mm): | 440 |
| Shape: | Rectangular |
| Installation: | Wall mounted |