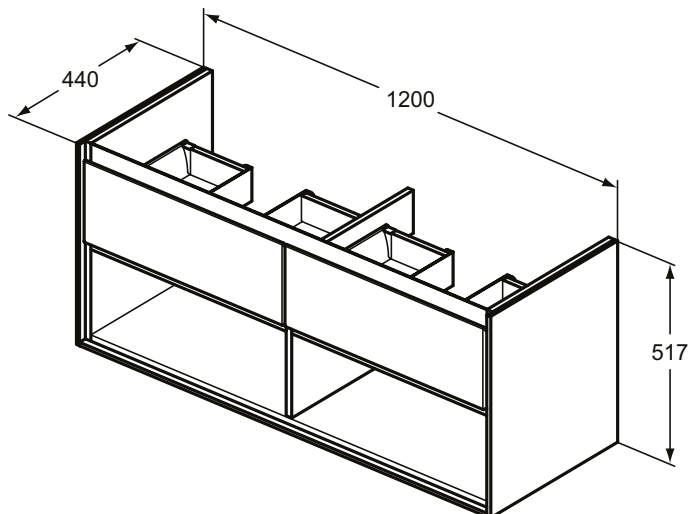
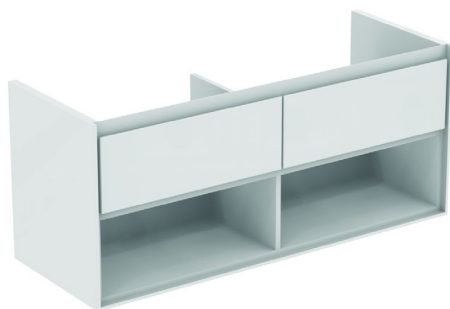


Furniture

Connect Air



Article-No.: **E0829B2**

Basin unit 120cm, 2 drawers

Connect Air basin unit 120 cm with 2 drawers with edged panels (handles not necessary) and Soft close system. With open storage shelves below the drawers. Incl.: Mounting kit. For assembly with: Connect Air Vanity basins 124 cm E0273 or Vessel basins (2 pcs.) 60 cm E0348 / 40 cm E0347 with required Worktop E0852. Recommended: Space Saving Siphon EE23033967 (please, order separately). See the IS Catalogue/Price list for more information on Recommended equipment and type of materials used.

Colour: B2 - Main outer finish is Gloss White, Internal finish is Matt White

More product details:

Type:	Vanity unit
Mounting:	Wall mounted
Style:	Contemporary
Net Weight (kg):	43,5
Material:	Lacquered MDF
Designer:	Studio Levien
Height (mm):	517
Width (mm):	1200
Depth (mm):	440
Shape:	Rectangular
Installation:	Wall mounted