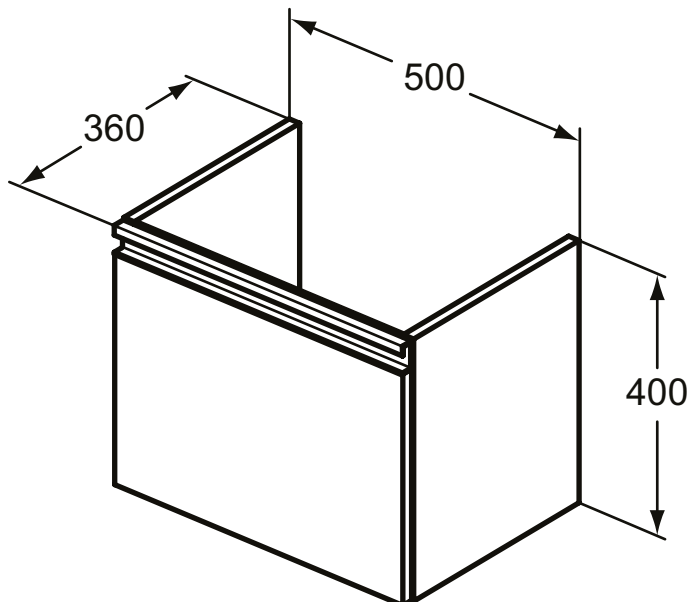
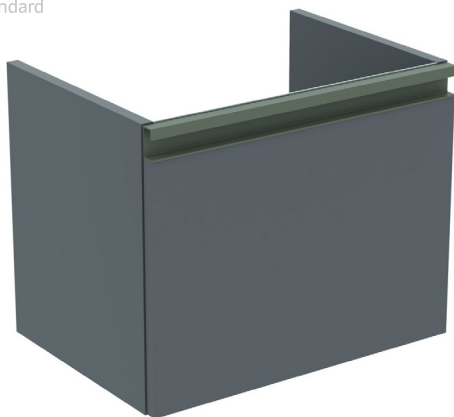


BASIN UNITS

Tesi



Article-No.: T0045PU

Basin unit 50cm, 1 drawer, short proj.

Tesi wall-mounted basin unit with 1 drawer, soft close system and 1 integrated handle. Including mounting kit. Recommended: Space saving siphon EE23033967 (please, order separately) For assembly with: Tesi vanity basin 52 cm T351101. Please see the IS Catalogue/Price list for more information.

Colour: PU - Matt Dark Taupe (Handle: Matt Dark Taupe)

More product details:

Type:	Vanity unit
Mounting:	Wall mounted
Style:	Contemporary
Net Weight (kg):	11
Material:	Lacquered MDF
Designer:	Studio Levien
Height (mm):	400
Width (mm):	500
Depth (mm):	360
Shape:	Rectangular
Installation:	Wall mounted